



# Inform

SQ Newsletter **March 2018**

[www.sculptorsqld.org.au](http://www.sculptorsqld.org.au)

[info@sculptorsqld.org.au](mailto:info@sculptorsqld.org.au)



## Message from the President

It has been a very busy start to 2018. We have a big calendar of events planned with some very interesting guest speakers for our forum nights. Our first forum was a great social and informative night enjoyed by members and friends and we look forward to the upcoming coming forums. Julie Donaldson has been hard at work coordinating the Gardens exhibition which is shaping up to be a very successful event and entry forms will soon be available on our website.

Great news! The grant to redo the kitchen has been approved and Bill Gale has taken on the responsibility of seeing the grant through to completion. This will be a great improvement to making 'The Shed' a more functional end enjoyable place to meet. Don't forget upcoming working B. Check details in this newsletter.

Our members have been very busy with exhibitions both local, rural Queensland and interstate, If you have any exhibition, workshops or things sculptural please send to [info@sculptorsqld.org.au](mailto:info@sculptorsqld.org.au) so we can share the news.

Next time you are in the city take a stroll through ANZAC and Post Office Square to check out the sculptures by well known sculptors including our patron Rhyl Hinwood and the Shillams sculpture 'The Bankers'.

Public Art trails and information are found on the Brisbane City Council web site and Wikipedia has a comprehensive List of Public Sculpture in Brisbane with photos so makes identifying sculptures easy.

Thanks to new member Natalia Smith who has agreed to take on the role of newsletter editor. We still have need for an auditor so if you can assist please contact me.

### Forum Mar 6th 7.30pm



**Joy Heylen**, Winner SWELL 2017.  
An exciting emerging artist. who has worked across three countries.

#### Where?

At The Shed behind the Old Museum. Bring a plate and join us for an interesting informative evening.

*Ros Haydon*

# ACTIVITIES AT THE SHED

First Tuesday of every month 7:30-9:30 pm

2

Monthly forums are presented in a relaxed atmosphere where invited sculptors discuss aspects of their art. These forums are open to the public and all interested parties are welcome.



**MARCH SPEAKER Joy Heylen,** has been involved in creative works across three countries, Australia, New Zealand & South Africa, encompassing editorial works, photography, fine art & sculpture and and recent winner 2017 Swell Sculpture Grand Prize



Joy says.....Winning the 2017 Neumann Family Sculpture Award has been a fantastic opportunity for me in anchoring my Art practice as an Emerging and previously Outsider Artist.

*This win has invigorated and catapulted me to the next stage of professional development and self-discovery as an artist. Since Swell 2017, many doors have opened for me professionally, one of which is the shift from an outsider artist to that of developing my professional capabilities. I have started a formal degree and have a future in Art much more defined.*



*As an Artist, my journey has encompassed a span of three countries. Born and bred in South Africa, living in New Zealand for seven years and now our final destination and what we call home, Australia.*

*I was lucky enough to be supported by my husband, which gave me the freedom to connect with the culture through immersing myself in the community. I volunteered for three years, in community projects, working with private and government agencies covering a range of social justice causes.*

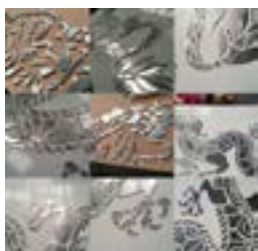


*Financial hardship became the necessary driving force behind my Art practice, and over the last five years, I have focused all my energies on creating a Commercial creative business engaging cultural entrepreneur strategies. I am thankful to count local councils and significant retailing companies, as my patrons, whom without their support; would've formed a challenging journey.*

*While necessary, in the pursuit of financial gain, I lost a piece of my artist identity, but I have gained insight into a formative framework which bridges the gap between Fine Art principles and Creative entrepreneurship. For me, there is a point of difference, in creating for financial value and creating for emotional value.*

*Through starting university studies (Double major- Fine Art & Visual Culture), I have learnt to engage deep thinking through critical reasoning and reflection, whereas before studying, in my outsider art practice; I would've committed these measures superficially.*

*The journey of self-discovery and has given me the opportunity to reflect and draw upon the critical reasoning in defining the next phase of my artist identity.*



*I have a strong sense of social justice, which has been lying dormant for a few years, and the next phase of my journey in self-discovery is to immerse myself in Indigenous culture through collaborative artworks.*

*I look forward to meeting my peers, fellow sculptors and exploring your journeys in self-discovery and how it participates your Art practice and professional development.*



[www.urbanvisulsculpture.com.au](http://www.urbanvisulsculpture.com.au)

Urban Visual Art & Sculpture

<https://www.facebook.com/search/top/?q=joy%20heylen%20sculptor>

urban\_visual\_sculpture P:0450 506 933

Facebook- Joy Heylen Sculptor

Instagram-



**Crossdale 4 Exhibition Somerset Regional Art Gallery "The Condensery" 29 Factory Rd Toogoolawah**

The exhibition, based on everyday life based on emotional and social interactions, runs until April 8<sup>th</sup> featuring sculptures by Jan Williams and ceramics by Jane Harthoorn with friends sculptor Ian Clarke and Sharon Lee.

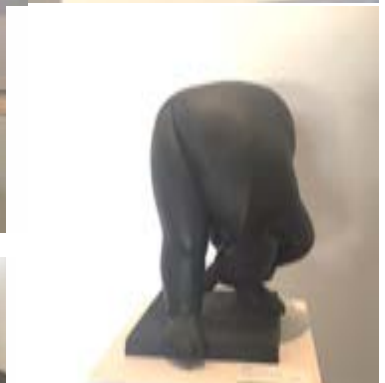
A large group of members and friends friends visited the exhibition and recommend a leisurely day out with a stop for lunch at Esk to enjoy this captivating exhibition



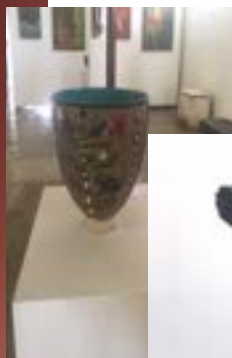
From left 'My local witch doctor', 'My nextdoor neighbour, Glenda' and 'My local artist' Jan Williams



Escalation to war Jane Harthoorn



Meteor Ian Clarke





Opening 4pm  
Sunday 25 February 2018

Exhibition open from 11am

FINALISTS EXHIBITION  
25 FEBRUARY - 28 OCTOBER 2018

OPEN 7 DAYS - FREE ENTRY  
MONTALTO - 33 SHOREHAM ROAD - RED HILL SOUTH - VIC - 3937  
03 5989 8412 WWW.MONTALTO.COM.AU

Here's a taste of the visual feast  
sculpture installations at Montalto.  
23 sculptures selected altogether



Installation of bronze swimmers – by Mela Cooke Tractor forklift used for the recycled ironbark plinths weighing 120kg and buried 1 metre square metal base supports the metal base plinths. All this was sent on a pallet from Brisbane, total weight 300 kgs

Photos Mela Cooke



## ***Sculptors Queensland Brisbane Sculpture Festival*** ***Exhibition Dates***

***May 18<sup>th</sup>, 19<sup>th</sup> and 20<sup>th</sup> 2018***

Members are reminded that entries close **Friday April 20<sup>th</sup>, 2018**  
Entry forms will be available soon on [www.sculptorsqld.org.au](http://www.sculptorsqld.org.au).

Time to start planning your entries now.

## **Membership**

Membership now due

Go to [www.sculptorsqld.org.au](http://www.sculptorsqld.org.au)

To renew your membership

Options are to renew online or print a form and bring to  
next meeting

-All details are on the website

***Fees increase by \$20 after March 1<sup>st</sup>***

If you need help, email or phone our Membership Coordinator  
Note that if want to exhibit at the Mt Coot-tha Members Exhibition  
you must be a financial member.

### **10 Benefits Sculptors receive from Sculptors Queensland membership:**

- Opportunity to exhibit, win awards and sell works
- Opportunity for commissions
- Making association and valuable contact with other sculptors, sculpture organisations and galleries
- Learning new skills via workshops, monthly symposiums and general discussion
- Gaining information on other exhibition and commission opportunities
- Gaining information on materials and processes
- Written support for grant applications (many have been successful and rewarding for members)
- Counting experience towards completion of courses
- Life drawing and long pose classes
- Residency - recent successful resident artists Ryan Daffurn and Scott Breton both winners of A.M.E Bale Travelling Art Scholarship of Atelier Studios, Carly Scoufos winner of Shillam Prize 2009. Check their websites.

\*\*\*\*\*

# Long Pose – Life Sculpting sessions

(non-tutored)

Next session Sunday 4<sup>th</sup> March

12:30 - 3:30pm

Sessions especially created to provide Long Poses for sculptors.

Also great for Painting and Drawing

A friendly fun atmosphere  
Coffee and cake provided

\$22.50 for members, \$25 for non-members

Plenty of parking on Sunday

Please let Grahame know by email or text so he can ensure numbers are right and everyone can have a good experience

Also if you have any special ideas about pose let him know

Graham Marshall 0409 449 017



Long Pose Workshop  
12:30pm to 3:30pm  
Sunday 4th March 2017

The "Shed" behind the Old Museum, Corner Bowen Bridge Road  
and Gregory Terrace  
\$25 non-members, \$22.50 Members  
Please rsvp to Graham on 0409 449 017

Model to be confirmed  
Modelling for sculpture is specialised and physically demanding.  
Models arranged by Brisbane's premier art agency BRISBANE ARTIST  
MODELS <http://www.levetagency.com.au>



## Life Drawing Thursday Nights

7:00-9:00pm

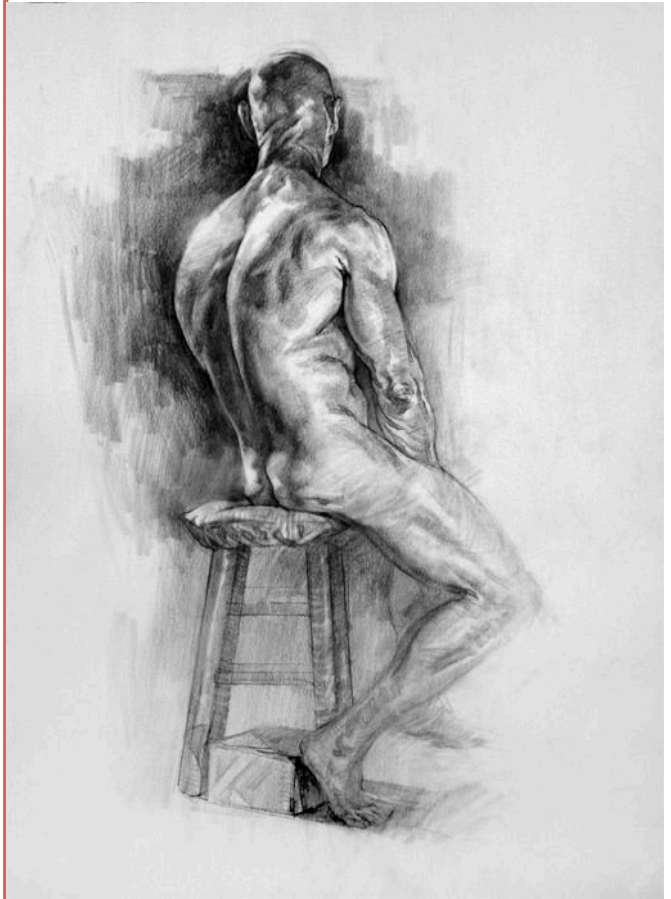
\$12.00 Members - \$15.00 Non members

Sculptors Queensland Shed  
Cnr. Of Gregory Terrace and Bowen Bridge Road,  
behind the old Museum.

BYO drawing materials, Easels, and some drawing  
boards are available to use.

Contact:

*Craig Fynmore 0412 538 136*  
*[drawing@sculptorsqld.org.au](mailto:drawing@sculptorsqld.org.au)*



### “BEE at the Shed”

Owing to extreme hot weather the **working bee** programmed for Feb was cancelled.

**New time Thursday 1<sup>st</sup> March 9.30am - 12.30pm**

**Look forward to seeing you there. Help make the shed a good environment to work in and enjoy, stocktake, check plinths, prepare signs’**

**RSVP Peter Steller** <mailto:peter@psart.com.au>

# Opportunities and Exhibitions

Closing entry date	Title	Exhibition dates	Contact for relevant information.
To be notified	Brookfield Sculpture Show	18 <sup>th</sup> , 19 <sup>th</sup> , 20 <sup>th</sup> May	<a href="https://www.brookfieldshowground.com.au/">https://www.brookfieldshowground.com.au/</a>
closed	Washed Ashore	From 8 <sup>th</sup> February	<a href="https://urbanparadise-gallery.com">https://urbanparadise-gallery.com</a>
closed	Toorak Village Sculpture Exhibition	01-10th June	<a href="http://toorakvillage.com.au/index.php?page=sculpture">http://toorakvillage.com.au/index.php?page=sculpture</a>
04 April	Stanthorpe Art prize 2D 3D	15- 22th July	<a href="http://www.stanthorpeartprize.org.au/">http://www.stanthorpeartprize.org.au/</a>
02 Mar	The HUTCHINS Australian Contemporary Art Prize	1-27 <sup>th</sup> June	<a href="http://www.artprize.hutchins.tas.edu.au/">http://www.artprize.hutchins.tas.edu.au/</a>
15 Mar	Bayside Acquisitive Art Prize	17 <sup>th</sup> May- 8 <sup>th</sup> July	<a href="http://www.artshub.com.au/">http://www.artshub.com.au/</a>
Now open	EKKA	Check website	Check web site for details
5 <sup>th</sup> Mar	SWELL	14 <sup>th</sup> -23 <sup>rd</sup> Sept	<a href="http://www.swellsculpture.com.au/artists-submissions/">http://www.swellsculpture.com.au/artists-submissions/</a>
2 <sup>nd</sup> April	Sculpture By The Sea	18 <sup>th</sup> Oct- 14 <sup>th</sup> Nov	<a href="http://sculpturebythesea.com/">http://sculpturebythesea.com/</a>



## Want to spread the news?

***Our aim at Inform is to keep you informed with the latest information on exhibitions, workshops and contacts. If you hear something you find interesting and would like to share it with our readers please send it to [newsletter@sculptorsqld.org.au](mailto:newsletter@sculptorsqld.org.au) for distribution and inclusion in the following newsletter.***

***We encourage Financial members to advertise their Exhibitions, Achievements and Workshops***  
***SQ Newsletter also welcomes advertisements for businesses who financially support Sculptors Queensland***

The newsletter provides information, and topical news and views considered to be of interest to our readers. Nothing written here is intended as a substitute for professional advice, and no liability arising from our publication is accepted. We make all attempts to ensure the accuracy of our information.



## Contact Details

Position	Name	Mobile	Email
General Enquiries			<a href="mailto:info@sculptorsqld.org.au">info@sculptorsqld.org.au</a>
President	<b>Ros Haydon</b>	0420920754	<a href="mailto:president@sculptorsqld.org.au">president@sculptorsqld.org.au</a>
Vice President Webmaster	<b>Cameron Eaton</b>	0415 419 940	<a href="mailto:vice-president1@sculptorsqld.org.au">vice-president1@sculptorsqld.org.au</a>
Vice President	<b>Mela Cooke</b>	0414 384 466	<a href="mailto:vice-president2@sculptorsqld.org.au">vice-president2@sculptorsqld.org.au</a>
Treasurer	<b>Jan Williams</b>	0499 971 958	<a href="mailto:treasurer@sculptorsqld.org.au">treasurer@sculptorsqld.org.au</a>
Minutes Secretary Shared position	<b>Jane Prasser</b>		<a href="mailto:secretary@sculptorsqld.org.au">secretary@sculptorsqld.org.au</a>
	<b>Jane Williams</b>		
Members Coordinator	<b>Claudje Lecompte</b>		<a href="mailto:membership@sculptorsqld.org.au">membership@sculptorsqld.org.au</a>
Newsletter Editor	<b>Ros Haydon Natalia Smith</b>		<a href="mailto:newsletter@sculptorsqld.org.au">newsletter@sculptorsqld.org.au</a>
Exhibition Coordinator	<b>Julie Donaldson</b>	0419 799 933	<a href="mailto:exhibitions@sculptorsqld.org.au">exhibitions@sculptorsqld.org.au</a>
Life Drawing	<b>Craig Fynmore</b>	0412 538 136	<a href="mailto:drawing@sculptorsqld.org.au">drawing@sculptorsqld.org.au</a>
Long Pose Workshop Coordinator	<b>Graham Marshall</b>	0409 449 017	<a href="mailto:long-pose@sculptorsqld.org.au">long-pose@sculptorsqld.org.au</a>
Librarian	<b>Hermann Shrout</b>		<a href="mailto:library@sculptorsqld.org.au">library@sculptorsqld.org.au</a>
Asst. Librarian	<b>Perry Wagner-Grose</b>		
Publicity	<b>Pat Steller</b>		<a href="mailto:info@sculptorsqld.org.au">info@sculptorsqld.org.au</a>
Committee	<b>Margaret Klucis</b>		
Committee	<b>Stephanie Mamm</b>		
Committee	<b>Peter Steller</b>		

## Frank Lambert Sculpture Prize contributors

